



nlsr

NATIONAL INSTITUTE OF
STATISTICS OF RWANDA



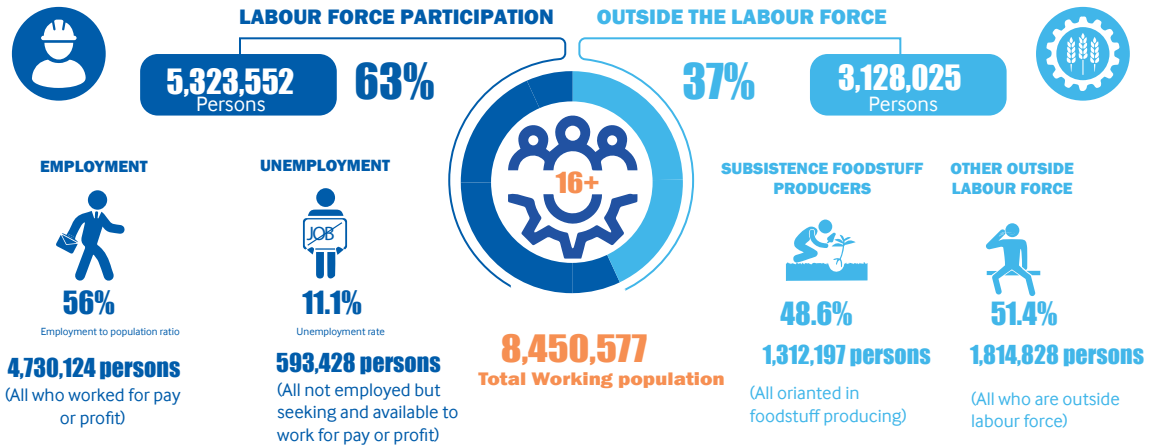
SUMMARY LABOUR FORCE INDICATORS

Q1 - 2025

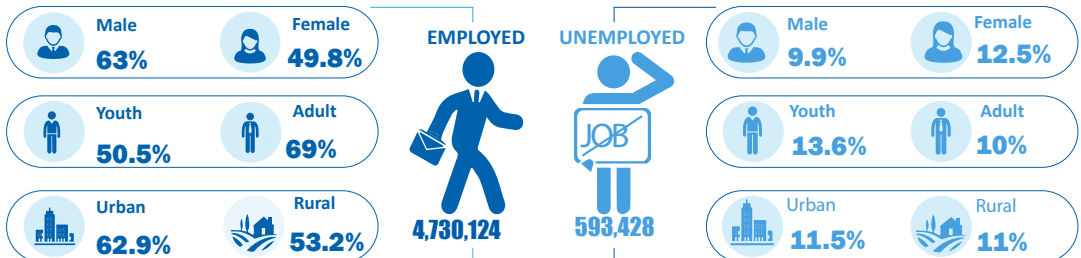


Rwanda Labour force survey 2025(Q1)

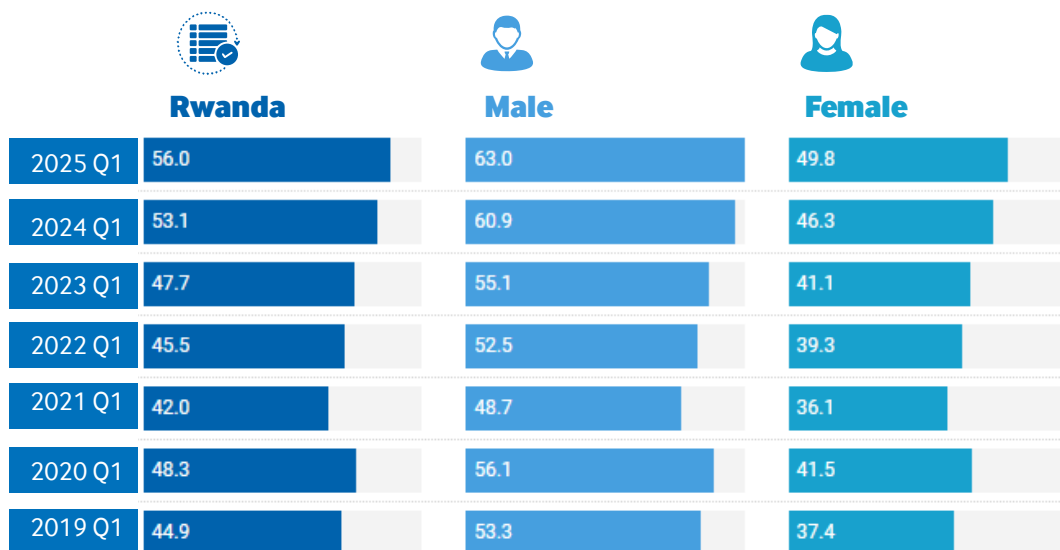
SUMMARY LABOUR FORCE INDICATORS



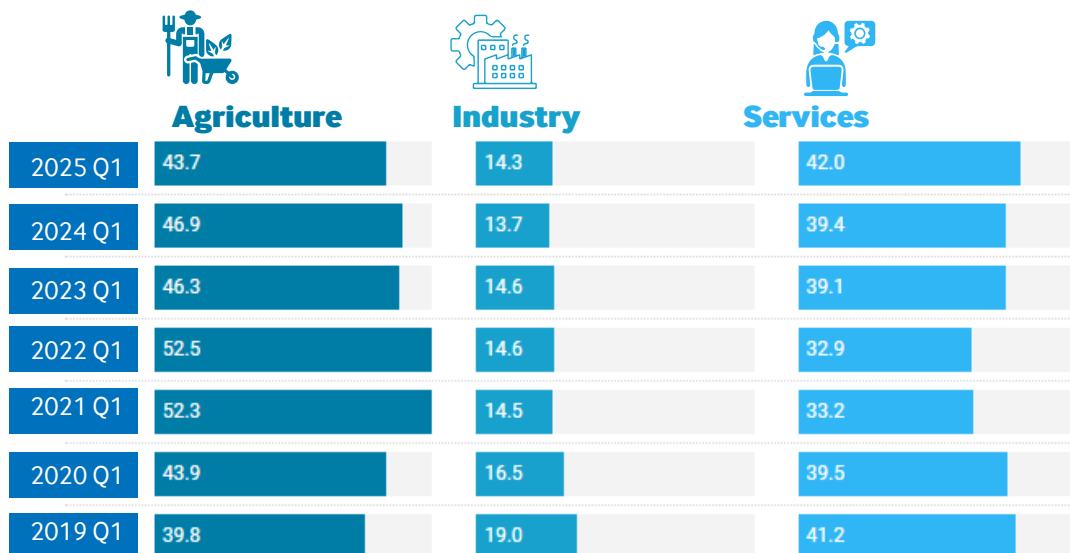
EMPLOYMENT & UNEMPLOYMENT STATUS



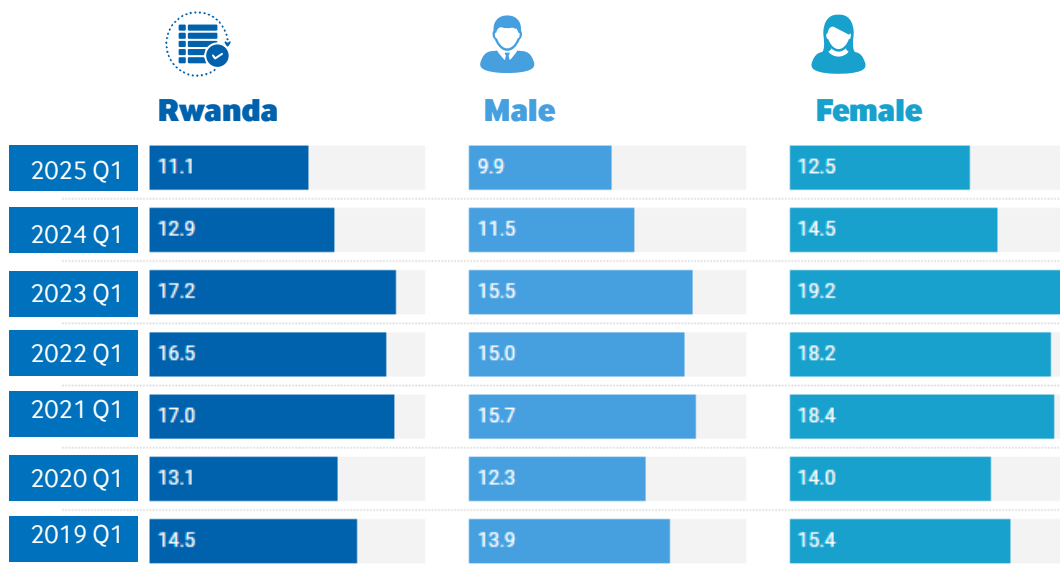
TREND (%) IN EMPLOYMENT TO POPULATION RATIO BY SEX



TREND (%) IN EMPLOYMENT BY BOARD SECTOR OF ECONOMIC ACTIVITY

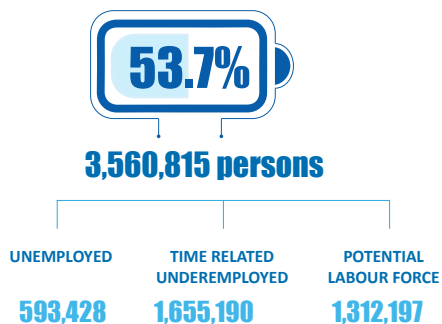


TREND (%) IN UNEMPLOYMENT RATE BY SEX

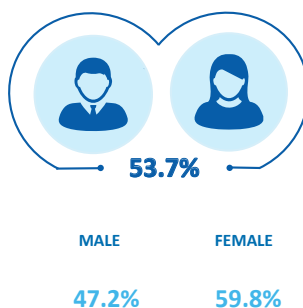


LABOUR FORCE UNDERUTILISATION

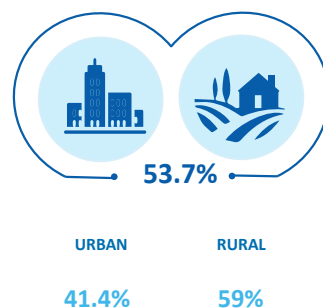
GENERAL UNDERUTILISATION



UNDERUTILISATION BY SEX



UNDERUTILISATION BY RESIDENCE



TREND (%) IN LABOUR UNDERUTILISATION



Rwanda



Male



Female

2025 Q1	53.7	47.2	59.8
2024 Q1	49.5	43.3	55.7
2023 Q1	54.2	48.0	60.4
2022 Q1	52.8	46.7	58.8
2021 Q1	59.0	54.1	63.8
2020 Q1	57.1	50.5	63.7
2019 Q1	56.8	48.8	64.6

TREND (%) IN LABOUR UNDERUTILISATION



Inactivity rate



Available non-jobseekers



Discouraged jobseekers

2025 Q1	37.0	15.2	10.0
2024 Q1	39.0	14.6	9.5
2023 Q1	42.4	16.8	11.6
2022 Q1	45.5	14.4	9.1
2021 Q1	49.4	18.7	12.2
2020 Q1	44.4	20.6	14.8
2019 Q1	47.5	21.2	15.0

"If You Don't Count, You Don't Count"



+250 788 38 3103



www.statistics.gov.rw



info@statistics.gov.rw